

# BOCANA RIDGE A

TODOS SANTOS | MLS: 24-1360 | 90,767 SF LOT SIZE



## Listing Overview

Custom design your Todos Santos land investment parcel with a trifecta of options. Bocana Ridge A boasts a generous 8432 m2 bordered on three sides with municipal access. Subdivided into two parcels, Bocana Ridge B offers 4432 m2, and Bocana Ridge C features 4000 m2.

All three properties have lovely ocean views from the road level and panoramic "forever views" are delivered from both the second and third levels. The Sierra de la Laguna mountains to the east provide a natural backdrop to spectacular sunsets to the west. The lots of Bocana Ridge are flanked by luxury homes, bringing added value to these spacious homesites.

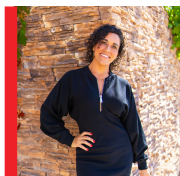
## Details

ROAD TYPE: Dirt Not Maintained  
TITLE: Escritura  
ELECTRICITY: Distance to CFE: on street  
WATER: Muni  
SEWAGE: Septic  
TOPOGRAPHY: Flat  
POTENTIAL USE: Development Parcel; Residential Lot



### JOANNE BERKOWITZ

REAL ESTATE ADVISOR, LOS CABOS  
JOANNE@THEAGENCYTODOSSANTOS.COM  
+52.624.147.5184



### DANIELA FLORES

REAL ESTATE ADVISOR, LOS CABOS  
DANI@THEAGENCYLOSCABOS.COM  
+52.624a.117.6132



THEAGENCYTODOSSANTOS.COM