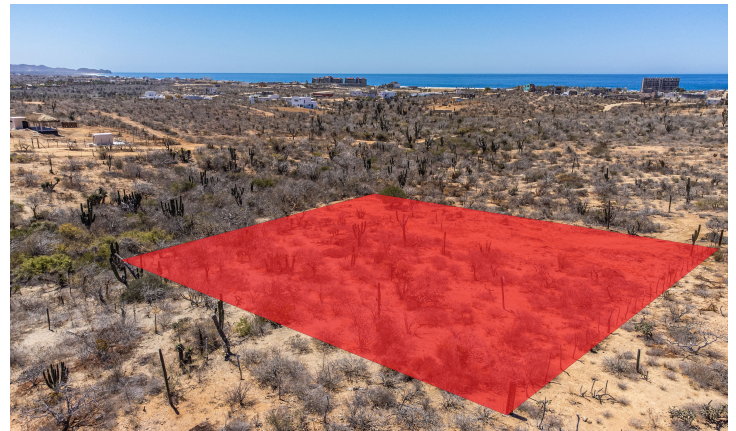
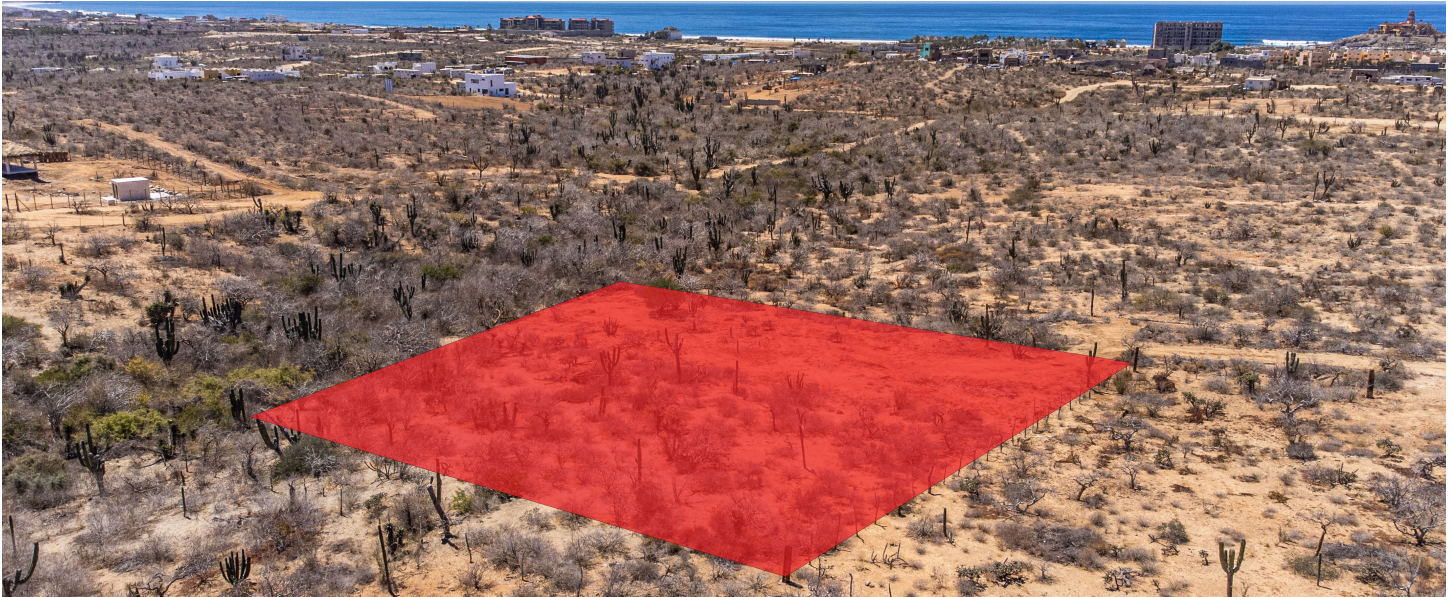


PICACHO LOT 1956

PESCADERO | MLS: 24-1732 | 21,527 SF LOT SIZE



Listing Overview

This plot has a notable advantage of being close to the Pacific Ocean. It is just a short distance from the soothing sound of the waves and the refreshing ocean breeze, creating a peaceful and serene environment. With its breathtaking ocean views, particularly from the second level of a house, residents will have the chance to witness stunning sunsets and enjoy the ever-changing colors of the sea.

The area is experiencing a rapid growth of residential communities, with numerous beautiful homes being built. Consequently, the infrastructure is quickly developing, including the provision of electricity. It is worth noting that the last electric pole that connects to the power source is located less than half a kilometer away from this lot, which ensures convenient access to electricity with a small investment.

Details

ROAD TYPE: Dirt Not Maintained
TITLE: Escritura
ELECTRICITY: Distance to CFE
WATER: Trucked
SEWAGE: Septic
HOW TO SHOW: Agent To Accompany; By Appointment Only
TOPOGRAPHY: Flat
POTENTIAL USE: Residential Lot



ADALI PARKS

REAL ESTATE ADVISOR, TODOS SANTOS
ADALI@THEAGENCYTODOSSANTOS.COM
+52.624.147.7532

